
**BEING A BYLAW OF LAMONT COUNTY IN THE PROVINCE OF ALBERTA TO AMEND
LAND USE BYLAW 848.22**

WHEREAS, the *Municipal Government Act, Chapter M-26, R.S.A. 2000* and amendments thereof authorizes the Council to establish and amend its Land Use Bylaw; and

NOW THEREFORE, the Council for Lamont County in the Province of Alberta, duly assembled, pursuant to the authority conferred upon it by the *Municipal Government Act, Chapter M-26, R.S.A. 2000* and amendments thereof, enacts as follows:

1. That *Land Use Bylaw No. 848.22* be amended by including "Commercial Development" at the location legally described as Ptn. NE-10-53-19-W4 in the list of Discretionary Uses of the Agricultural (A) District.
2. That the area shown in red in "Schedule A" of this bylaw be designated as Heartland Light/Medium Industrial Highway Commercial (HLMI/HC) District in *Land Use Bylaw No. 848.22*.
3. This amending bylaw shall be consolidated into Bylaw 848.22.

This Bylaw shall come into force and effect when it has received third reading and has been duly signed.

READ A FIRST TIME IN COUNCIL THIS 10th DAY OF SEPTEMBER 2024.

READ A SECOND TIME IN COUNCIL THIS _____ DAY OF _____ 20 ____.

READ A THIRD TIME IN COUNCIL AND FINALLY PASSED THIS _____ DAY OF _____ 20____.

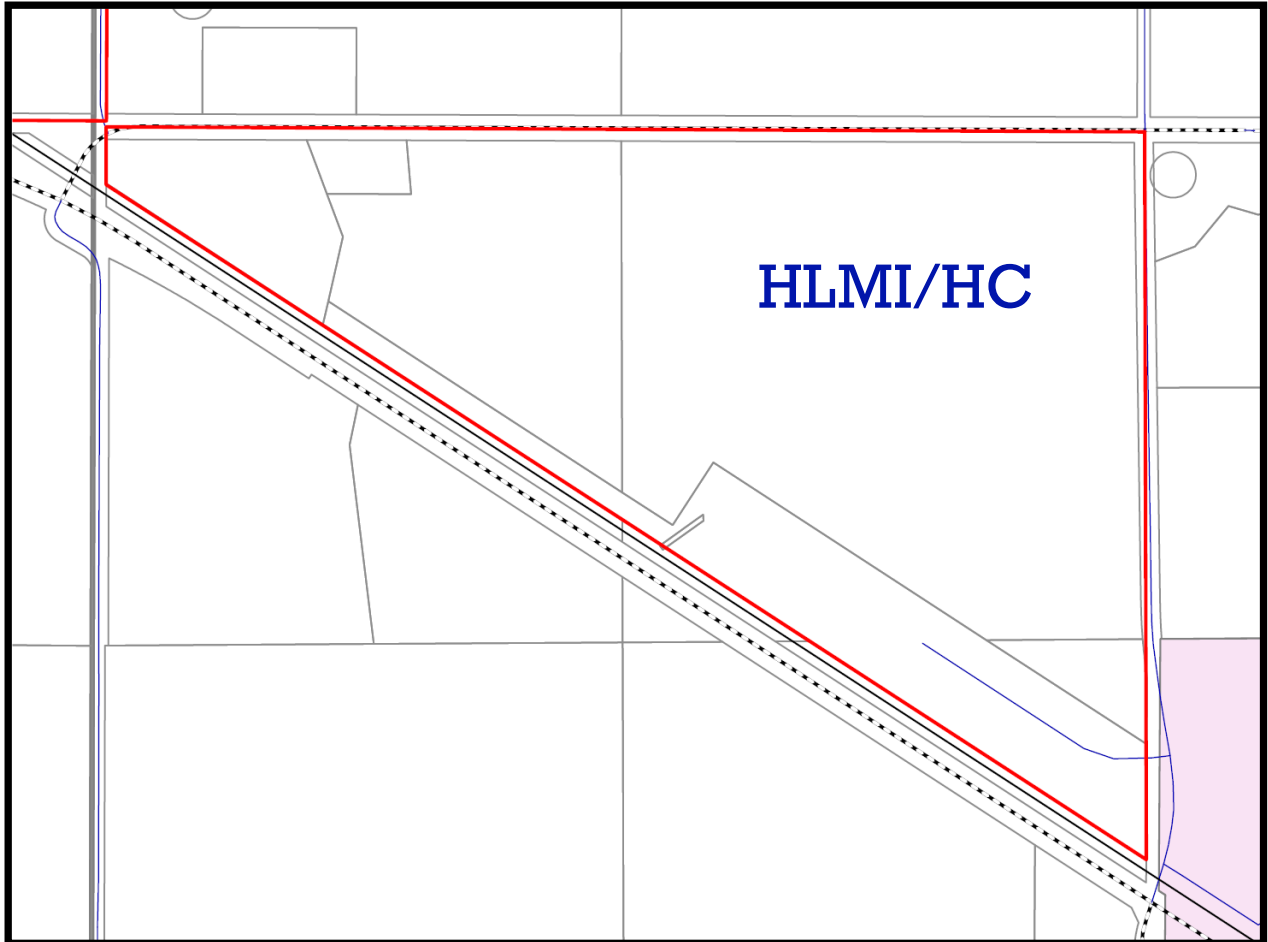
Reeve

CAO

Date Signed

Schedule "A"

Map 1 – NW ¼ & NE ¼ Section 19, Township 55, Range 19, West 4M



HLMI/HC – Heartland Light / Medium Industrial / Highway Commercial District